

Welcome

>> please join the circle!



NANCY



Anna Caroline



Doris



BORA



Emilie



Ann-Heidi



Gowoon



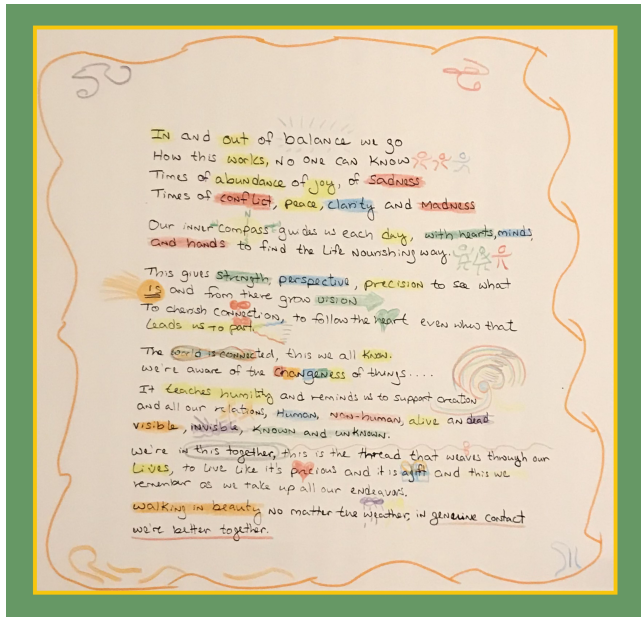
Birgitt





The GC Way Gallery & Exhibit

Assisting people, including leaders and their organizations, in making decisions to have a shift in consciousness to live their full potential, creating breakthroughs in their personal lives and in their organizations. [She] imagines that organizations everywhere can achieve their true wealth and fulfill their chosen purpose, vision, and goals. [She] imagines that through nourishing a culture of leadership in organizations, life-depleting choices will fade into the past and life-nourishing choices will be made benefitting people, society, and the environment for us and the generations that follow.



The world I want to see (how the world is better with the Genuine Contact Way in it)

The world I want to see is one where all life is precious. It is one where people are able to follow their creativity while being aware of how their one voice is part of many, and in that way all that we do has consequences for the other. And this is something we are able to practice and learn to do well, being individuals and collectively bound.

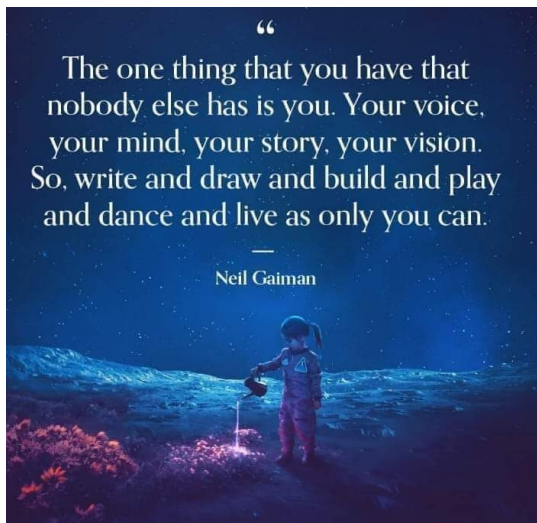
The world I want to see is one where people are equipped to live free, to have perspective, to be aware of their choices and to make them anyway. It is a world where uniqueness is cherished and where, it is possible to thrive, in unique ways beyond all the posturing and boxes that I feel are often around in society. It is a world where people, and their organizations, live in harmony with the rest of creation, knowing that there is both beauty and ugliness that will be there. It is a world where we humans are able to live in and with the world as it is, and from there make creative contributions.

What people working the GC Way (like me!) do to make this world happen.

We do our best to live as above. We offer our services in whatever way and with whatever language we have to others who are also wanting to live like this. We take care of ourselves, we hone our skills, we stay curious, we stay open, we believe it is possible, especially in the moments it doesn't feel like it is. For some of us, (like me) this may include working with leaders and organizations or communities as consultants, for others it may be working inside an organization or dedicating their learning to their family and personal life. The place and position doesn't matter. What does matter is to be available to learn and to show up in the outside world, to the best of your ability each day, in this way.



Wat
th
vide

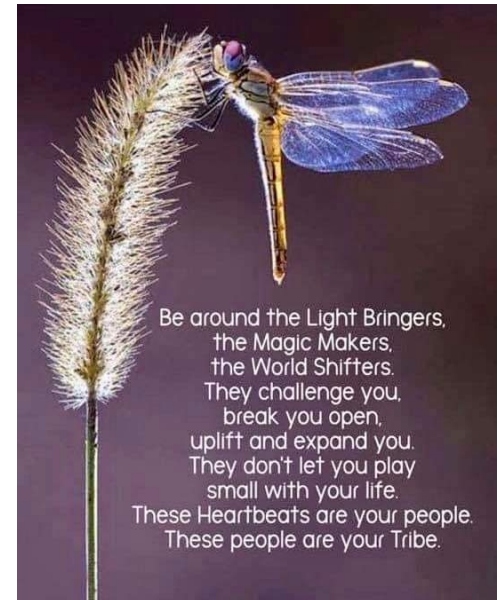


The world I want to see (how the world is better with the Genuine Contact Way in it)

The world I want to see is for all people to be in touch with the inherent goodness that they are. I choose this wisdom from the author Neil Gaiman to enhance what I am wanting to convey about people being people, people as precious.

What people working the GC Way (like me!) do to make this world happen

When Ward was asked 'what do you do?', his answer was and is 'we make magic'. Depending on the person asking the question, they would either say nothing and end the conversation, or, and this occurred more frequently, they would ask to be told more. We work as light bringers, magic makers and world shifters. From these gifts we challenge, break open, uplift and expand. We encourage people as individuals and in teams to expand into their beautiful potential.



I was inspired by this fruit, citrus medic sarcodactylis. Very fragrant, and also sensitive - to too much cold and too much heat. Also called Manu de Buda, Fingers of Buddha. Signifying Luck and Prosperity.

Abundance

Of life

Survival, conflict, grieve

Get space alongside with

Beauty

Beauty

Of dialogue

Collaboration resonance, embraced

By the awareness all is

Energy



The world I want to see (how the world is better with the Genuine Contact Way in it)

A world where each individual is in Genuine Contact with Self, Others, and Creation is a sustainable World. To be able to be in Genuine Contact in this way, there is a need to develop better skills in conscious dialogue with the Self and the Other about our visions, purpose, intentions, resources, and how we invite the Other to be part of a shared future.

The pictures illustrate the same and bridge my connection between my life as a mother, grandmother and leader, influenced by my Master of Social Science and Genuine Contact theory. To let Change happen, you must connect to others holistically, bridging all the parts to an achievable and attractive whole for the individual to engage with, relating to others, organizations, and Society in a Capacity building spiral of constant learning. Learning requires the skills of reflecting, questioning assumptions and beliefs of Self and Others, and active dialogue through active listening, rephrasing and building upon each other's contributions to form a shared understanding for action in a common future.

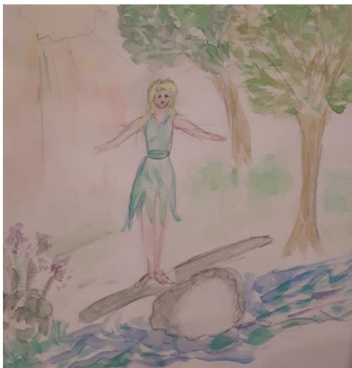
What people working the GC Way (like me!) do to make this world happen.

I continuously invite people to and take part in Workshops and meetings, where we learn and practice the GC Way while working with genuine cases, mentoring each other, and training leadership skills based on the GC Program, guided by a qualified GC Trainer.



The world I want to see is a natural and joyful world where everyone has their place, where everyone is valuable and where love is the dominant energy. With the GC Way we create, stabilize and sustain the foundation for a loving world for the coming generations, because the GC way is in itself a natural way of collaborating for common causes. .

What we can do to make this happen is to place ourselves in leadership positions where we can live and work the GC Way, both in our private and professional lives, where we can be mentors by showing how we tend to our balance, enjoy all the small and big moments of joy in life and invite the fairies to land in our forest or backyard.



The world I want to see (how the world is better with the Genuine Contact Way in it)

A world where each person is seen and treated as precious. Where each of us is afforded the luxury of spending our time in life-nourishing environments where we thrive in purposeful work. A world where passion and personal mission easily and readily intersect with work. A world where the organizations where we each choose to spend our time build people up while making a positive difference in the local community.

What people working the GC Way (like me!) do to make this world happen

Working inside organizations or as external supports, we offer tools and approaches for creating life-nourishing environments where work gets done thoroughly and well. We do this through supporting organizations in development processes and with training to increase capacity for working in participatory and holistic ways. Our local and international GC hubs are leading by example, inviting people to experience the magic of the Genuine Contact way of working and living.







Tap Color Pro

Download to color 20,000+ wonderful pics!

The world you want to see (how the world is better with the Genuine Contact Way in it)

- Safety for people (basic psychological, social, physical safety)
- Wise decisions must be made
- Wisdom, trust
- Healing powers be mobilized
- Co-creative change work helps us find solutions to complex issues
- Dialogic organizational development (dialogic world development, dialogic life development)

What people working the GC Way (like you!) do to make this world happen

- Collective co-creation
- Humanity and efficiency, Know-how
- Walk the talk
- Moving between different worlds, perspectives, levels and rituals, cultivate, reflection, harvest, give-take steps, presence, contradiction, and complexity- Simplicity, Challenge and support.
- Trust
- Creativity and playfulness
- Light, inner energy, spirit



FACE TO FACE LMT MEETINGS



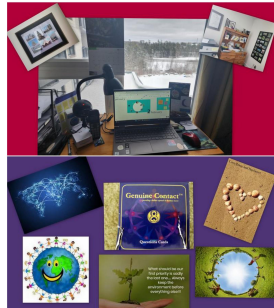
MENTORING CIRCLES, DEEP LEARNING & CONVERSATIONS



FOOD, EXPLORING OUR SURROUNDINGS AND MORE DISCUSSION
(ALWAYS LAUGHTER)



WORKING ONLINE IN GENUINE CONTACT
(GC WITH OTHERS AND WITH MY WORLD)



TO CO-CREATE A WORLD WHERE WORK, PLAY, HARMONY IN NATURE AND WITH ONE ANOTHER IS THE NATURAL ORDER OF LIFE.

UNDERSTANDING THAT UNIQUENESS AND DIVERSITY CREATES HEALTH AND BALANCE IN ALL ECO-SYSTEMS.

WORKING WITH AND UNDERSTANDING COMPLEXITY CREATES A RICH, DIVERSE AND UPLIFTING WORLD.

STANDS THE TEST OF TIME!!

Reflection Circle: Noticings & Insights

one thread is the action words for us, and drawing them out from each presentation will be valuable



Magic and Spirit are mentioned in many contributions

Universal, challenging and contributing

Creative process

Many aspects of love as a guide

Future ...
Walking practicing doing now for now and the future

Work/life balance in action

natural

Deep work (inclusive)

Bridging worlds talk of bridging//and connection

Connection to also conflict/grief eetc.

Individual contributions weave together collectively. What are we building over the years? How do we give a sense of this possibility for people who haven't yet met GC?

Education and children/ students and teachers

Life nourishing environment. personal passion and mission align with the work.

Working with CHANGE

Building for the next 7 generations, while honouring the past and present.



There is doing//not just thoughts it is doing/being it as best we can



Deepening Understanding of the Genuine Contact Way

What is the problem the Genuine Contact Way is addressing?
(Are there any specific needs or issues that GCW points out?)

What is the Genuine Contact Way?
(How does the GCW describe/introduce what the GCW is?)

What does the Genuine Contact Way provide/serve?
(Product or service we created for the issue)

Why does the Genuine Contact Way matter?
(How does the GCW fulfill people's needs or provide solutions for issues?)



What is the problem the Genuine Contact Way is addressing? (Are there any specific needs or issues that GCW points out?)

Problem:
dysfunctional
organizations

Problem: waste
of wisdom and
energy in
'traditional'
ways of working

Problem:
taking time
for finding
perspective

Problem:
feeling of
separation
and isolation

Problem: we are
wasting time, energy
and potential to find
the togetherness we
need to answer the
challenges of the
future

Problem:
people
struggle to
work in
diversity

Problem: lack
of agility in a
time of real
change

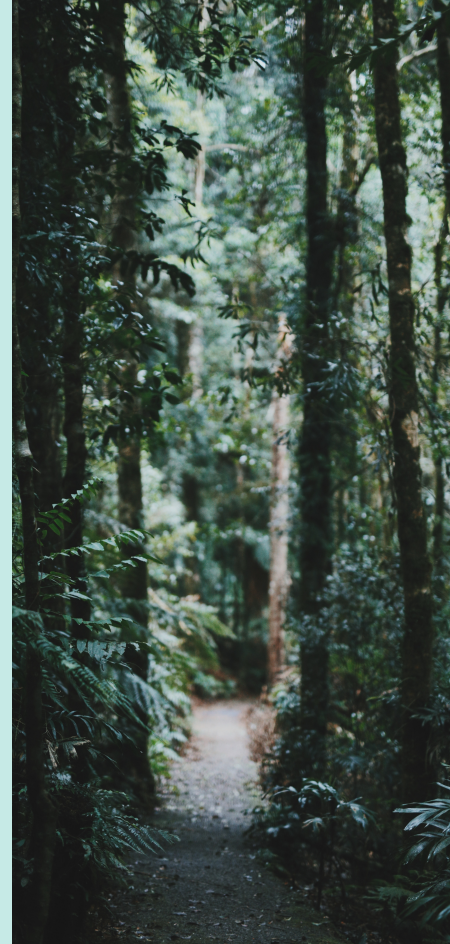
Problem: not
focusing on
connection
before
solution

We are not
equipped to deal
with the current
complexity alone

Problem:
difficulty to
find ways to
really work
together

Problem:
Waste of
wisdom

Problem: lack
of ownership
and
responsibility



What is the problem the Genuine Contact Way is addressing? (Are there any specific needs or issues that GCW points out?)

organizations and their leaders who know they have a problem and their livelihood depends on finding a solution

people are living and working in a **life-depleting environment** and feeling alone

lack of a feeling of freedom, connection, possibility, and personal power

Wanting to empower people to become leaders of their own future, but

its addressing a hopeful worldview

formal leaders who get stuck and realize that they need something to help but don't know what

finding true alignment within an organization that is not artificially manipulated

lack of connection in society and lack of doing things together inter-generational

not enough (leadership) education for the youth

lack of training of personal leadership, not enough trust in oneself

organizational clients who say "we need magic" to find our solution

where there is a desire for diversity, equity, inclusion and belonging but don't know how to make this cultural shift

Disconnection with self / wish to be connected to self

Lack of understanding of whole person

Lack of opportunity to work with personal resources, Spirit health & balance through dialogue with others.





What is the Genuine Contact Way? (How does the GCW describe/introduce what the GCW is?)

an open and holistic approach to being and pathfinding that honors the collective

a methodology to help organizations become life nourishing and people thrive

A holistic way to support growth of individuals and organizations in connection to the environment

GCW is a work and life methodology to support health and balance of the organism

a magical way of finding common directions

meeting methodology expert

we use meetings as catalysts to make the world a better place

transformational journeys for people and organizations



What is the **Genuine Contact Way**? (How does the **GCW** describe/introduce what the **GCW** is?)

Holistic approach to solve complex issues

An open space that invites a whole person.

holistic leadership development approach to life nourishing creation

life nourishing creation through capacity development and expansion

living being choosing to offer a life nourishing difference

Capacity building through dialog driven collaborative processes & meetings

capacity development towards full potential of the entity

an invitation to be genuine with oneself and others

respectful invitation to work on all sides of life, being human and part of Society at your own pace

What does the Genuine Contact Way provide/serve? (Product or service we created for the issue)

Functional:
Methods to
resolve
conflict

Functional:
giving space
for all voices
to be heard

Expertise in
participatory
processes

Working with
organizations to
build capacity
to think and act
strategically

GCW provides
simple tools and
methodologies to
build connections,
grow perspectives
and solve complex
issues



Face: Inner
beauty of the
balanced and
inclusive
approach



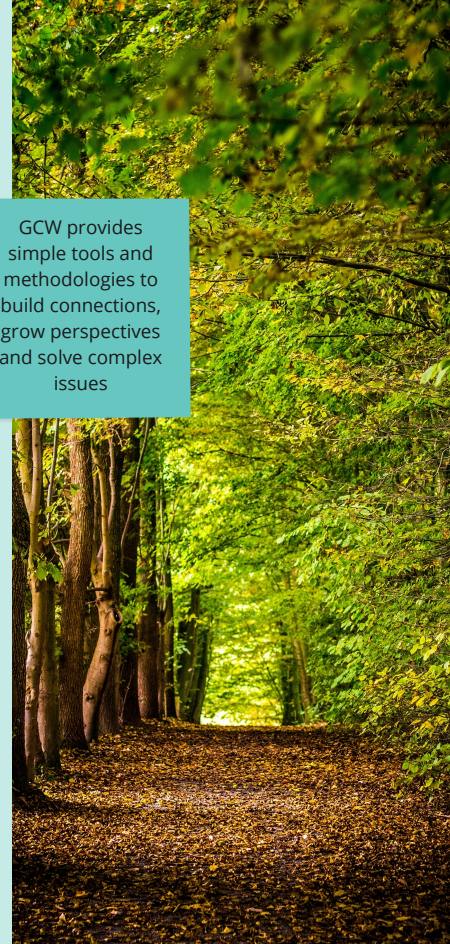
Face:
Productive,
creative and
forward-
thinking

Grow capacity of
people to take
responsibility of
their work and life

Give tools and
methodologies
to thrive in
change

We guide the
process for inner
wisdom to become
present - and teach
the skills to work
with it

We make
people
shine



What does the Genuine Contact Way provide/serve? (Product or service we created for the issue)

ing tools and
iques that
s you to co-
e elegant
ons together
hose you
operate with

Tools to do the
work with
complex issues
and being united
as community

Rest & Trust - no
matter the
complexity of a
situation, one can
rest and trust in the
GCW having what is
needed.

Open invitations to
Learning
opportunities,
within the freedom
of always following
your heart and
energy

synergistically
blended approach
of beliefs,
processes, tools,
attitude

capacity building
ough dialog
en
aborative
cesses &
etings

Possibilities
and capacity
building for
the leaders.

Community
to practice
with

the flame
behind the
beacons

I serve the people who are
attracted to work with me,
the GCW being, asking you
to continually develop and
expand yourselves so you
can be of the best service
in the world

A
facilitation

capacity to
lead your
life and be
in balance

Inspiration and
energy for those
who like to learn
how to create a life-
nourishing
environment around
them

rest in the
beliefs,
whatever the
complexity of
the situation

being provided
for by the
GCW - I don't
have to be
smart or clever

an invitation
for lifelong
learning and
expanding
oneself





Why does the Genuine Contact Way matter? (How does the GCW fulfill people's needs or provide solutions?)

it is the future
skill without
which we
cannot survive

because it is
essential we work
in harmony with
ourselves and our
environment

Because
constant
dysfunction is a
waste of
energy

because in this
world of wicked
problems there is no
single person
knowing it all - and
no one best answer

Beacu
of..

Because we know
how to make this
transition from
the old world to
the new world

Because we
are really good
at teaching
others how to
do so.

Because if you
continue to just act
without perspective
you continue to
create the problems
you wanted to
address

We need to build
capacity to go
through this
rapidly changing
and diverse
society

THRIVE!



Why does the Genuine Contact Way matter? (How does the GCW fulfill people's needs or provide solutions?)

Capacity to live your life in Health & Balance and lead yourself in Achieving your dreams

The invitation to homework for a lifetime: living in genuine contact with self, another, collective, and creation.

I see the full potential of you, do you?

I see the potential of making a sustainable & life nurturing Future for all when The GC Way grow

ignites the potential for leadership that resides in every person

I am a living being and deserve to be nourished. I am nourished when I am in a playground with you

People can fully present in their lives

cheers people on to creating a life nourishing future, free of tyranny

sustainable life nourishing future for individuals, groups, cultures, organizations of all sizes

when the GCW helps organizations be more life nourishing, the systemic issues will disappear

Because it leads people to live fully and as a whole - everyone has right to live in nourishing environment.